

User Instruction Manual

ANGLE GRINDER DL-JM180-E1



The picture is for reference only

Contents

1. Original instruction
2. General safety rules
3. Tool use and care
4. Service
5. Special safety rules
6. Functional instructions Angle Grinder 2000W
7. Specification
8. Explosion map
9. Part list



ORIGINAL INSTRUCTIONS

- Before using this Angle Grinder, please carefully read though these HANDLING INSTRUCTIONS.
- Ensure that you know how the machine works, and how it should be operated.
- Maintain the machine in accordance with the instructions, and make certain that the machine work correctly.
- Please store this instruction and other enclosed documents with the machine together.

General Safety Rules (For All Tools)

WARNING:

Read all safety warnings and all instructions. Failure to follow all warnings and instructions may result in electric shock, fire and/or serious injury.

SAVE THESE INSTRUCTIONS

Work Area

- Keep work area clean and well lit. Cluttered and dark areas invite accidents.
- Do not operate power tools in explosive atmospheres, such as in the presence of flammable liquids, gases or dust. Power tools create sparks which may ignite the dust or fumes.
- Keep children and bystanders away while operating a power tool. Distractions can cause you to lose control.

Electrical safety

- Power tool plugs must match the outlet. Never modify the plug in any way. Unmodified plugs and matching outlets will reduce risk of electric shock. Don't change the plug in any way.
- Avoid body contact with earthed or grounded surfaces such as pipes, radiators, ranges and refrigerators. There is an increased risk of electric shock if your body is earthed or grounded.
- Do not expose power tools to rain or wet conditions. Water entering a power tool will increase the risk of electric shock.

- Do not abuse the cord. Never use the cord to carry the tools or pull the plug from an outlet. Keep cord away from heat, oil, sharp edges or moving parts. Replace damaged cords immediately. Damaged or entangled cords increase the risk of electric shock.

- When operating a power tool outdoors, use an outdoor extension cord marked "W-A" or "W". These cords are rated for outdoor use and reduce the risk of electric shock.

Personal safety

- Stay alert, watch what you are doing and use common sense when operating a power tool. Do not use a power tool while you are tired or under the influence of drugs, alcohol or medication. A moment of inattention while operating power tools may result in serious personal injury. Dress properly. Do not wear loose clothing or jewelry. Keep your hair, clothing and gloves away from moving parts. Loose clothes, jewelry or long hair can be caught in moving parts.
- Avoid accidental starting. Be sure the switch is off before plugging in. Carrying power tools with your finger on the switch or plugging in power tools that have the switch on invites accidents.
- Remove any adjusting keys or wrenches before turning the power tool on. A wrench or a key that is left attached to a rotating part of the power tool

may result in personal injury.

- Do not overreach. Keep proper footing and balance at all times. Proper footing and balance enables better control of the power tool in unexpected situations.
- Use safety equipment. Always wear eye protection. Dust mask, non-skid safety shoes, hard hat, or hearing protection must be used for appropriate conditions. Ordinary eye or sun glasses are NOT eye production.

TOOL USE AND CARE

- Use clamps or other practical way to secure and support the work piece to a stable platform. Holding the work by hand or against your body is unstable and may lead to lose of control.
- Do not force the tool. Use the correct tool for your application. The correct tool will do the job better and safer at the rate for which it is designed.
- Do not use the tool if the switch does not turn it on and off. Any tool that cannot be controlled with the switch is dangerous and must be repaired.
- Disconnect the plug from the power source before making any adjustments, changing accessories, or storing power tools. Such preventive safety measures reduce the risk of starting the power tool accidentally.
- Store idle tools out of the reach of children and other untrained persons. Tools are dangerous in the

hands of untrained users.

■ Maintain tools with care. Keep cutting tools sharp and clean. Properly maintained tools with sharp cutting edges are less likely to bind and are easier to control.

■ Check for misalignment or binding of moving parts, breakage of parts and any other condition that may affect the power tools operation. If damaged, have the tool serviced before using. Many accidents are caused by poorly maintained tools.

■ Use only accessories that are recommended by the manufacturer for your model.

Accessories that may be suitable for one tool, may become hazardous when used on another tool.

SERVICE

■ Tool service must be performed only by qualified repair personnel. Service or maintenance performed by unqualified personnel could result in a risk of injury.

■ When servicing a tool, use only identical replacement parts. Follow instruction in the maintenance section of the manual. Use of unauthorized parts or failure to follow maintenance instructions may create a risk of electric shock or injury.

SPECIAL SAFETY RULES

DO NOT let comfort or familiarity with product (gained from repeated use) replace strict adherence

(gained from repeated use) replace strict adherence to grinder safety rules. If you use this tool unsafely or incorrectly, you can suffer serious personal injury

■ Always use proper guard with grinding wheel. A guard protects operator from broken wheel fragments.

■ Accessories must be rated for at least the speed recommended on the tool warning label. Wheels and other accessories running over rated speed can fly apart and cause r injury.

■ Hold tool by insulated gripping surfaces when performing an operation where the cutting tools may contact hidden wiring o its own cord. Contact with a "live" wire will make exposed metal parts of the tool "live" and shock the operator.

■ When using depressed center grinding, wheels, be sure to use only fiberglass reinforced wheels.

■ Always use safety glasses or goggles. Ordinary eye or sun glasses are NOT safety glasses.

■ Check the wheel carefully for cracks or damaged before operation. Replace cracked or damaged wheel immediately. Run the tool (with guard) at no load for about a minute. Holding tool away from others. If wheel is flawed, it will likely separate during this test.

■ Use only flanges specified for this tool.

■ Be careful not to damage the spindle, the flange (especially the installing surface) or out flange.

Damage to these parts could result in wheel breakage.

■ NEVER use tool with wood cutting blades or other saw blades. Such blades when used on a grinder

saw blades. Such blades when used on a grinder frequently kick and cause loss of control leading to personal injury.

■ Hold the tool firmly.

Paints and wood could expose user to dust containing hazardous substances. Use appropriate respiratory protection.

■ Keep hands away from rotating parts.

■ Make sure cord is clean of wheel. Do not wrap cord around your arm or wrist. If control of tool is lost, cord may become wrapped around you and cause personal injury.

■ Make sure the wheel is not contacting the work piece before the switch is turned on.

■ Before using the tool on an actual work piece, let it run for a while. Watch for vibration or wobbling that could indicate poor installation or a poorly balanced wheel.

■ Use the specified surface of the wheel to perform the grinding.

■ Watch out for flying sparks. Hold the tool so that sparks fly away from you and other persons or flammable materials.

■ Do not leave the tool running. Operate the tool only when hand-held.

■ Do not touch the work piece immediately after operation; it may be extremely hot and could burn your skin.

■ ALWAYS wear proper apparel including long sleeve

shirts. Leather gloves and shop aprons to protect skin from contact with not grindings.

■ Use of this tool to grind or sand some products. Paints and wood could expose user to dust containing hazardous substances. Use appropriate respiratory protection.



Functional instructions Angle Grinder 2000W

SAVE THESE INSTRUCTIONS

WARNING: MISUSE or failure to follow the safety rules stated in this instruction manual may cause serious personal injury.

V	Voltage
A	Ampere
Hz	Hertz
N ₀	No load speed
--/Min	Revolutions or reciprocation minute
	class II construction

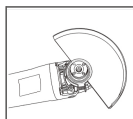


Fig1

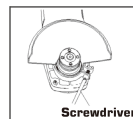


Fig2

FUNCTIONAL DESCRIPTION

Operation instructions:

■ Wheel Guard

Please aim the convex end of the wheel guard to the slot mouth of the front cover, and then rotate the guard body to 180 degree, finally tighten the fastening screw (Fig 1 & Fig 2)

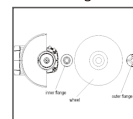


Fig3

■ Installing or removing grinding wheel

Caution !

When using an abrasive cut-off wheel, be sure to use only the supplied wheel guard, inner flange, out flange designed for use with cut-off wheels.

1. Mount the inner flange onto the spindle, fit the wheel/disk on the inner flange and screw the outer flange onto the spindle (Fig 3).

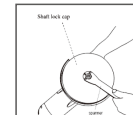


Fig4

2. To tighten the outer flange, press the shaft lock firmly so that the spindle cannot revolve, then use the lock nut wrench and securely tighten clockwise.(Fig 4)

3. To remove the wheel, follow the installation procedure in reverse.

NOTICE:

The groove of INNER FLANGE must align the flatness of spindle when you install the wheel and tighten enough.

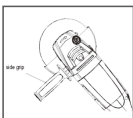


Fig5

Side grip (Fig 5)

Caution !

Always be sure that the side grip is installed securely before operation.

The both sides & top side of tool's head designed three screw holes to assemble the grip side. Screw

the side grip securely on the position of the tool as shown in the figure 5.

Hold the side grip firmly by hand all the way you will control the tool better.

Switch action (Fig 6)

Caution !

Before plugging in the tool, always check to see that the switch trigger actuates properly and returns to the "OFF" position when released.

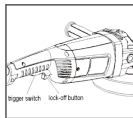


Fig6

Switch can be locked in "ON" position for ease of operator comfort during extended use. Apply caution when locking tool in "ON" position and maintain firm grasp on tool.

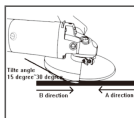


Fig7

■ Effective and safe for Grinding and sanding operation.

Always hold the tool firmly with one hand on housing and the other on the side handle, turn the tool on and then apply the wheel or disc to the work piece.

Forbid operating tool under the condition of removing the wheel guard.

1.The users can get satisfied effects if the users give 1/2 strength compared with the own weight of the tool. Over strength is easy to make the tool engine and abrasive wheel damaged because of overload.

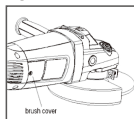


Fig8

2.Generally speaking, please keep the grinding and cutting part of the wheel and disc in the scope of 15 to 30 degree with the surface of processing object. (Fig 7)

3. In general operation, should start first then work, In reverse should leave work piece then stop.

■ Replacing carbon brushes

1.Remove and check the carbon brushes regularly. Replace when the tool occur obvious sparks or wear down to the limit mark.

2.Both carbon brushes should be replace at the same time.Use only DELI brushes provided.

3.Please send this tool to the authorized service center to replace or be replaced by the experience worker always.

CAUTION:

Be sure to re-install the knob after inserting new carbon brush.

After replacing brushes, plug in the tool and break in brushes by running tool with no load for about 3 minutes. Then check the tool while running, when releasing the switch trigger. If the tool is not working well, ask your local DELI service center for repair.

To maintain product SAFETY and RELIABILITY, repairs, any other maintenance or adjustment should be performed by DELI Authorized or Factory service centers, always using DELI replacement parts.

Maintenance & Daily care.

CAUTION!

Always be sure that the tool is switch off and unplugging before attempting to perform inspection and maintenance.

1.The tool and its air vents have to be keep clean regularly clean the tools air vents or whenever the vents star to become obstructed.

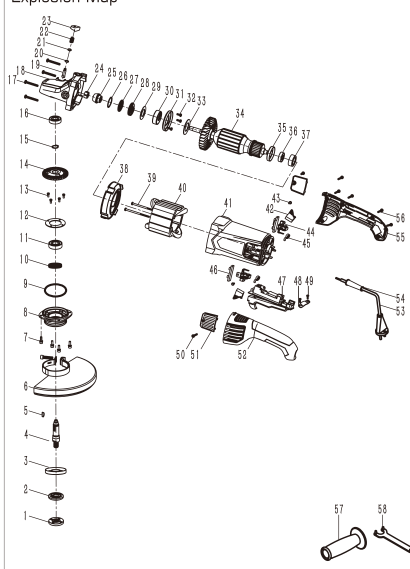
2.Cheekthe all screws if be loosened or not periodically.

3.Usually check the cord insulation if broken or not.

Technical data:

ANGLE GRINDER 180-2000W	
Model	DL-JM180-E1
Voltage	220-240V~
Frequency	50-60Hz
Power	2000W
No load speed	8450rpm
Disc diameter	180 mm
Weight	5.0 Kg
Accessories	1set carbon brush 1 wheel guard 1 side handle 1 spanner 1 operation instruction

Explosion Map



Part list

Item No	Part Name	QTY	Item No	Part Name	QTY
1	Outer Flange	1	31	Dust ring	1
2	Inner Flange	1	32	Screw M4X10	3
3	Dust cover	1	33	Flat washer	1
4	Output shaft	1	34	Armature	1
5	Key 4x4x16	1	35	Dust cover	1
6	Wheel cover	1	36	6200bearing	1
7	Screw M5x16	4	37	6200 bearing sleeve	1
8	Bearing holder	1	38	Baffle plate	1
9	O ring	1	39	Screw ST4X75	2
10	Oil sealing	1	40	Stator	1
11	6203 bearing	1	41	Motor housing	1
12	Bearing retainer	1	42	Carbon brush	2
13	Screw M4x12	8	43	Screw ST4X12	2
14	Big gear	1	44	Brush holder	2
15	Ring spring	1	45	Coil spring	2
16	6000 Bearing	1	46	brush holder base	2
17	Screw ST5x35	4	47	switch	1
18	Gear housing	1	48	Wire plate	1
19	Self-locking pin	1	49	screw ST4X14	2
20	washer	1	50	Screw ST4X12	2
21	sealing ring	1	51	Brush holder cover	2
22	spring	1	52	Switch handle-Left	1
23	Pin cap	1	53	Power cord	1
24	Mut10	1	54	Cord guard	1
25	Small gear	1	55	Switch handle-right	1
26	O ring	1	56	Screw ST4X16	5
27	Flat washer	1	57	Side handle	1
28	Baize circle	1	58	Wrench	1
29	Flat washer	1			
30	6301bearing	1			

Product Warranty Card

Dear users :

Thank you for buying our products. In order to ensure your profit, users who buy our products can contact local distributor or Specified repair stations with invoice and warranty cards if the product failures due to quality problems.

Warranty Notice:

1.From _____ (Year/Month/Day) to _____ (Year/Month/Day),

If the failure happen in normal use, our company will provide free warranty, parts replacement and other services according to the failure situation.

2.This warranty card and purchase invoice are the voucher of after-sales service provided by our company to customers. The card must be detailed only after filling in the following form and affixing the official seal with the distributor.

3.In one of the following cases, free warranty service will be invalid, and maintenance fees will be required:

- (1) Exceed the expiration date;
- (2) Failure or damage caused by not following the requirements of the product manual, maintenance or improper storage;
- (3) Failure or damage caused by disassembling, repairing or modification of the product without the permission of our company ;
- (4) Machine breakdown or damage caused by force majeure;
- (5) Consumable accessories.

This card is issued with the product. One card for one machine, to ensure that you can fully enjoy the right to free warranty service provided by the company, please keep this card properly, lost will not be replaced.

Purchase Date: _____ (Year/Month/Day)

Product Certificate

Inspector:

01

Date of manufacture:

NINGBO DELI TOOLS CO., LTD.
No. 128 Chezhan West Road, Huangtan Town,
Ninghai County, Ningbo, Zhejiang, China
delitoolsglobal@nbdeli.com
www.delitoolsglobal.com
+86 574 87562689
MADE IN CHINA



Reserved for future use

Version: 1.1

Date: Feb. , 2023