

TEST REPORT

<u>Applicant</u>	: ningbo deli tools co. ltd.
<u>Address</u>	: No. 128, Chezhan West Road, Huangtan Town, Ninghai County, Ningbo, Zhejiang, China
<u>Sample description</u>	: marble cutter
<u>Item no.</u>	: DE-YS110-1E
<u>Manufacturer</u>	: suzhou deli technology Co., Ltd.
<u>Country of origin</u>	: China
<u>Sample received date</u>	: 17-Mar-2025
<u>Further information date</u>	: 09-May-2025
<u>Turn around time</u>	: 17-Mar-2025 To 12-May-2025
<u>Test specification</u>	: Total concentration of Lead, Cadmium, Mercury, Chromium VI, Polybrominated Biphenyls (PBBs), Polybrominated Diphenyl Ethers (PBDEs), Bis(2-ethylhexyl) phthalate (DEHP), Butyl benzyl phthalate (BBP), Dibutyl phthalate (DBP) and Diisobutyl phthalate (DIBP) in accordance with EC Directive 2011/65/EU and its amendment Directive (EU) 2015/863 (RoHS)
<u>Conclusion</u>	: Based on the analysis on the selected components of the submitted product, the test results do comply with the concentration limits as specified in Annex II to Directive 2011/65/EU and its amendment Directive (EU) 2015/863

The following test item(s) was/were performed on selected sample(s) and/or component(s) appointed by applicant.

Samples are obtained by express delivery, Results obtained refer only to samples, products or material received in Laboratory, as described in point related to sample description, and tested in conditions shown in present report. Eurofins MTS Consumer Product Testing (Shanghai) Co., Ltd ensures that this job has been performed according to our Quality System and complying contract and legal conditions. Unless otherwise stated from the customer, regulation or the standard specification, Eurofins will apply it in accordance with ILAC G8:09/2019-(binary statement for simple acceptance rule). If you happen to have any comments, please do it by sending email to info.sh@cpt.eurofinscn.com and referring to this report number. Reproduction of this document is only valid if it is done completely and under the written permission of Eurofins MTS Consumer Product Testing (Shanghai) Co., Ltd. If you happen to have any complaints, please do it by sending email to info.sh@cpt.eurofinscn.com and referring to this report number.



***** FOR FURTHER DETAILS, PLEASE REFER TO THE FOLLOWING PAGE(S) *****

Signed for and on behalf of
Eurofins MTS Consumer Product Testing (Shanghai) Co., Ltd.

Linda

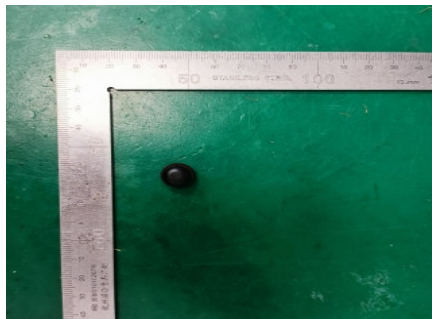


Linda Jin
Chemical Division Assistant Manager SLTH

SAMPLE PHOTO(S)**EFW525033838-CG-01**

TO BE CONTINUED

COMPONENT PHOTO(S)



1



2



3



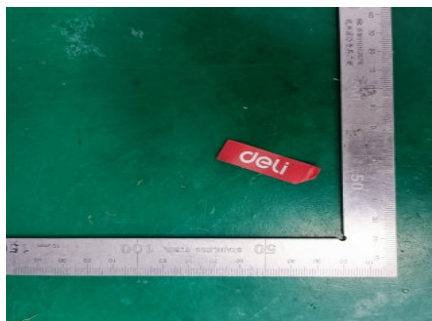
4



5



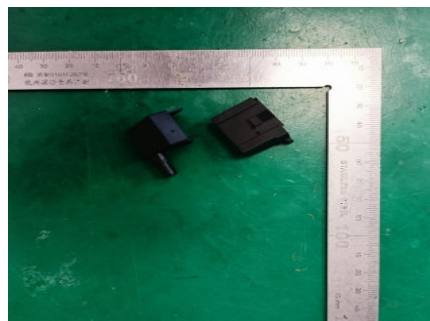
6



7



8



9



10



11



12

TO BE CONTINUED

COMPONENT PHOTO(S)



13



14



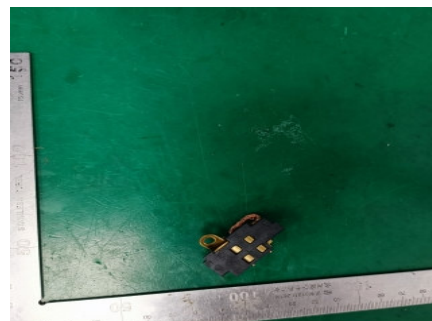
15



16



17



18



19



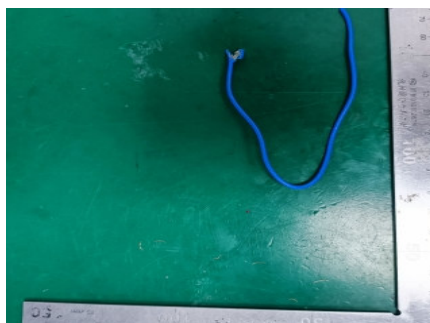
20



21



22



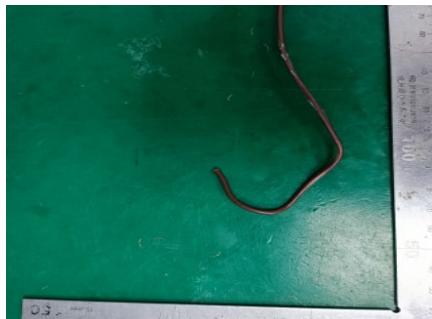
23



24

TO BE CONTINUED

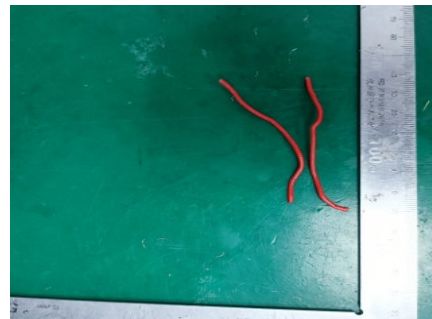
COMPONENT PHOTO(S)



25



26



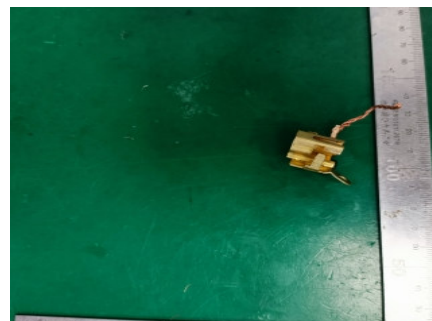
27



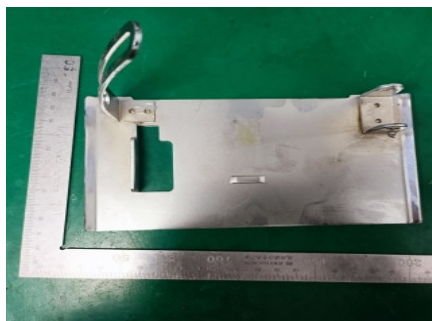
28



29



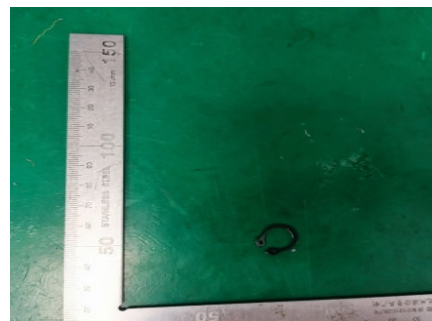
30



31



32



33



34



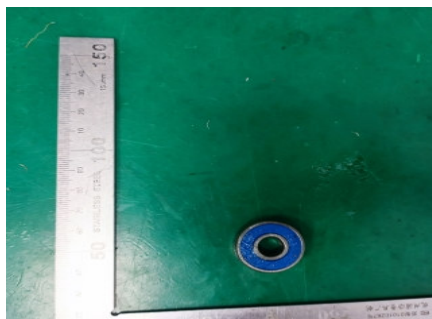
35



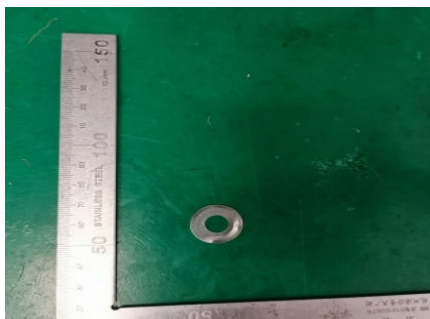
36

TO BE CONTINUED

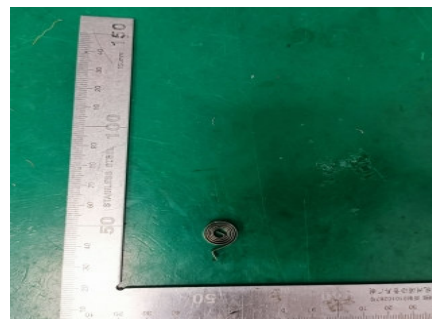
COMPONENT PHOTO(S)



37



38



39



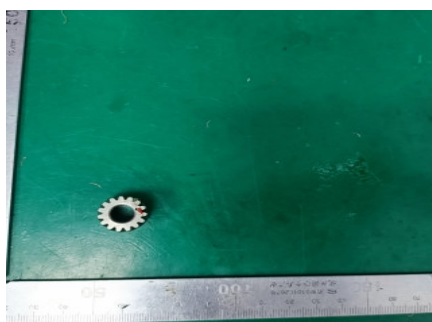
40



41



42



43



44



45



46



47



48

TO BE CONTINUED

COMPONENT PHOTO(S)



49



50



51



52



53



54



55



56



57



58



59



60

TO BE CONTINUED

COMPONENT PHOTO(S)**61****62****63****64****65*******TO BE CONTINUED*****

TEST RESULT

Part 1

A. Screening Test by XRF Spectroscopy

As specified by client, to analyze the contents of Lead, Cadmium, Mercury, Chromium, Bromine in the submitted sample by XRF. Screening limits in mg/kg for regulated elements in various matrices according to IEC 62321-3-1:2013

No.	Component	Test Results (mg/kg)				
		Cd	Pb	Hg	Cr	Br
		Limit (mg/kg)				
		100	1000	1000	Cr(VI): 1000	PBB:1000 PBDE:1000
1	Black soft plastic button	BL	BL	BL	BL	BL
2	Black soft plastic handle	BL	BL	BL	BL	BL
3	White plastic inside the plug	BL	BL	BL	BL	NC
4	Black soft plastic plug	BL	BL	BL	BL	BL
5	Black sticky paper	BL	BL	BL	BL	BL
6	Black soft plastic wrapped conduit	BL	BL	BL	BL	BL
7	Red sticky paper	BL	BL	BL	BL	BL
8	White plastic fan	BL	BL	BL	BL	BL
9	Black plastic 1	BL	BL	BL	BL	NC
10	Black plastic 2	BL	BL	BL	BL	NC
11	Red coating on plastic	BL	BL	BL	BL	BL
12	Black plastic body	BL	BL	BL	BL	BL
13	Black plastic lid	BL	BL	BL	BL	BL
14	Black plastic ring	BL	BL	BL	BL	BL
15	Black plastic cover	BL	BL	BL	BL	BL
16	Beige Soft Plastic	BL	BL	BL	BL	BL
17	Yellow plastic electrical components	BL	BL	BL	BL	NC
18	Black plastic 3	BL	BL	BL	BL	BL
19	White plastic buckle	BL	BL	BL	BL	BL
20	Translucent white plastic cover	BL	BL	BL	BL	BL
21	Black wrapped leather	BL	BL	BL	BL	BL
22	Red soft plastic sleeve	BL	BL	BL	BL	BL
23	Blue wire cover 1	BL	BL	BL	BL	BL
24	Blue wire cover 2	BL	BL	BL	BL	BL
25	Coffee colored wire sheath	BL	BL	BL	BL	BL
26	Black wire sheath	BL	BL	BL	BL	BL
27	Red wire cover	BL	BL	BL	BL	BL
28	White soft plastic pipe	BL	BL	BL	BL	BL
29	Silver metal body	BL	BL	BL	BL	NA
30	Golden metal sleeve	BL	BL	BL	BL	NA
31	Silver metal plate	BL	BL	BL	NC	NA
32	Silver metal block 1	BL	BL	BL	NC	NA
33	Black metal buckle 1	BL	BL	BL	NC	NA
34	Black metal buckle 2	BL	BL	BL	NC	NA
35	Silver metal block	BL	BL	BL	BL	NA
36	Silver metal gear	BL	BL	BL	NC	NA
37	Silver metal bearings	BL	BL	BL	NC	NA
38	Silver metal gasket	BL	BL	BL	NC	NA
39	Silver metal ruler	BL	BL	BL	NC	NA

TO BE CONTINUED

TEST RESULT

No.	Component	Test Results (mg/kg)				
		Cd	Pb	Hg	Cr	Br
		Limit (mg/kg)				
		100	1000	1000	Cr(VI): 1000	PBB:1000 PBDE:1000
40	Silver metal motor	BL	BL	BL	NC	NA
41	Silver metal plug	BL	BL	BL	BL	NA
42	Silver metal button	BL	BL	BL	NC	NA
43	Silver metal gear	BL	BL	BL	NC	NA
44	Silver metal with black coating	BL	BL	BL	BL	NA
45	Black metal knob	BL	BL	BL	BL	NA
46	Black metal screw 1	BL	BL	BL	BL	NA
47	Black metal screw 2	BL	BL	BL	BL	NA
48	Black metal screw 3	BL	BL	BL	NC	NA
49	Black metal screw 4	BL	BL	BL	BL	NA
50	Black metal screw 5	BL	BL	BL	NC	NA
51	Black metal screw 6	BL	BL	BL	BL	NA
52	Golden metal sheet 1	BL	BL	BL	BL	NA
53	Silver metal connector	BL	BL	BL	BL	NA
54	Golden metal sheet 2	BL	BL	BL	BL	NA
55	Silver metal connector 1	BL	BL	BL	BL	NA
56	Carbon rod	BL	BL	BL	BL	BL
57	Black metal spring 1	BL	BL	BL	NC	NA
58	Black metal spring 2	BL	BL	BL	BL	NA
59	Copper wire	BL	BL	BL	BL	NA
60	Silver metal wire	BL	BL	BL	BL	NA
61	Silver metal screw	BL	BL	BL	NC	NA
62	Silver metal nut	BL	BL	BL	BL	NA
63	Black metal nut 1	BL	BL	BL	NC	NA
64	Black metal nut 2	BL	BL	BL	NC	NA
65	Black metal screw 7	BL	BL	BL	NC	NA

TO BE CONTINUED

TEST RESULT

Abbreviation:	Pb	denotes Lead
	Cd	denotes Cadmium
	Hg	denotes Mercury
	Cr	denotes Chromium
	Cr(VI)	denotes Chromium(VI)
	Br	denotes Bromine
	PBBs	denotes Total Polybrominated Biphenyls
	PBDEs	denotes Total Polybrominated Diphenyl Ethers
	NA	denotes Not Applicable
	NC	denotes Not Conclusive
	BL	denotes Below limit

XRF Screening limits for different materials:

Element	Polymers	Metals	Composite Material
Cd	$BL \leq (70-3\sigma) < X < (130+3\sigma) \leq OL$	$BL \leq (70-3\sigma) < X < (130+3\sigma) \leq OL$	$LOD < X < (150+3\sigma) \leq OL$
Pb	$BL \leq (700-3\sigma) < X < (1300+3\sigma) \leq OL$	$BL \leq (700-3\sigma) < X < (1300+3\sigma) \leq OL$	$BL \leq (500-3\sigma) < X < (1500+3\sigma) \leq OL$
Hg	$BL \leq (700-3\sigma) < X < (1300+3\sigma) \leq OL$	$BL \leq (700-3\sigma) < X < (1300+3\sigma) \leq OL$	$BL \leq (500-3\sigma) < X < (1500+3\sigma) \leq OL$
Br	$BL \leq (300-3\sigma) < X$	/	$BL \leq (250-3\sigma) < X$
Cr	$BL \leq (700-3\sigma) < X$	$BL \leq (700-3\sigma) < X$	$BL \leq (500-3\sigma) < X$

Note:

BL= Below limit

X = The region where further investigation is necessary

OL = Over limit

3σ = The repeatability of the analyzer at the action level

LOD = Limit of detection

TO BE CONTINUED

TEST RESULT

B. Confirmation Test by Wet Chemistry

Tested Item(s)	Test Method	Measured Equipment	MDL
Lead (Pb) /Cadmium (Cd)	IEC 62321-5:2013	ICP-OES	10 mg/kg
Mercury (Hg)	IEC 62321-4:2013/AMD1:2017	ICP-OES	10 mg/kg
Hexavalent Chromium (Cr(VI))	IEC 62321-7-1:2015	UV-Vis	0.01µg/cm ²
	IEC 62321-7-2:2017		10 mg/kg
Polybrominated Biphenyls (PBBs)	IEC 62321-6:2015	GC-MS	50 mg/kg
Polybrominated DiphenylEthers (PBDEs)			

Component No.	Boiling-water-extraction for Cr(VI) (*1)
31	Negative
32	Negative
33	Negative
34	Negative
36	Negative
37	Negative
38	Negative
39	Negative
40	Negative
42	Negative
43	Negative
48	Negative
50	Negative
57	Negative
61	Negative
63	Negative
64	Negative
65	Negative

Remark:

(*1) The screening result of Chromium (VI) was found in the inconclusive region, Thus the Chromium(VI) content in surface layer have been confirmed with reference to IEC 62321-7-1:2015.

Negative - The Cr(VI) concentration is below 0.10µg/cm².The coating is considered a non-Cr(VI) based coating.

TO BE CONTINUED

TEST RESULT

Component No.	Test Results (mg/kg)					
	Cd	Pb	Hg	Cr (VI)	PBBs	PBDEs
	Limit (mg/kg)					
	100	1000	1000	1000	1000	1000
3	-	-	-	-	ND	ND
9	-	-	-	-	ND	ND
10	-	-	-	-	ND	ND
17	-	-	-	-	ND	ND

Note:

The sample had been dissolved totally tested for Lead, Cadmium, Mercury.

MDL = method detection limit

ND = not detected (<MDL)

mg/kg = ppm = parts per million

µg/cm² = micrograms per square centimeter

TO BE CONTINUED

TEST RESULT

Part 2

Diisobutyl phthalate (DIBP), Bis (2- ethylhexyl) phthalate (DEHP), Butyl benzyl phthalate (BBP) and Dibutyl phthalate (DBP)

Test specification : Total concentration of Bis(2-ethylhexyl) phthalate (DEHP) , Butyl benzyl phthalate (BBP) , Dibutyl

phthalate (DBP) and Diisobutyl phthalate (DIBP) in accordance with EC Directive 2011/65/EU and its amendment Directive (EU) 2015/863 (RoHS)

Test method : IEC 62321-8:2017

Limit : Annex II to Directive 2011/65/EU and its amendment Directive (EU) 2015/863

Component	Test Results (%)			
	DIBP	DEHP	BBP	DBP
	Limit (%)			
	0.1%	0.1%	0.1%	0.1%
7+8+9	ND	ND	ND	ND
10+11+12	ND	ND	ND	ND
13+14+15	ND	ND	ND	ND
16+17+18	ND	ND	ND	ND
19+20+21	ND	ND	ND	ND
28	ND	0.006	ND	ND

Note:

ND = Not Detected (<0.005%)

0.1% equals to 1000 mg/kg

According to client's request, tests are combination tests. The experimental results are the total result of mixed samples.

As per client's request, only the appointed materials have been tested.

END OF THE REPORT